

Gardner

Denver[®]

Liquid Transfer Solutions



Gardner Denver's ALL-IN-ONE Liquid Bulk Package

The Industry's Premier Bolt-&-Go Liquid Bulk Transfer Solution

Key Features & Benefits:

- Forward and reverse variable speed pump control standard
- Quiet, all stainless steel enclosure for up to 5 dBA noise reduction and corrosion resistance
- Simultaneous pump/compressor operation capability for faster offloading
- Spacious pump connections for easy attachment/detachment
- Compressor airflow indicator allowing operator to adjust to known positions
- No-drill mounting option
- Package includes industry trusted GD70 piston compressor
- Gear and vane pump options to fit your liquid bulk application

Compressor + Pump + Hydraulic Cooler =

GD360



The Package That Has It All, Does It All

Hassle-Free Serviceability

- Air Filter - no tools required
- Oil Fill - no tools required
- Oil Filter - socket wrench to loosen just four bolts
- Hydraulic filter serviceable without draining oil
- No air required to actuate controls

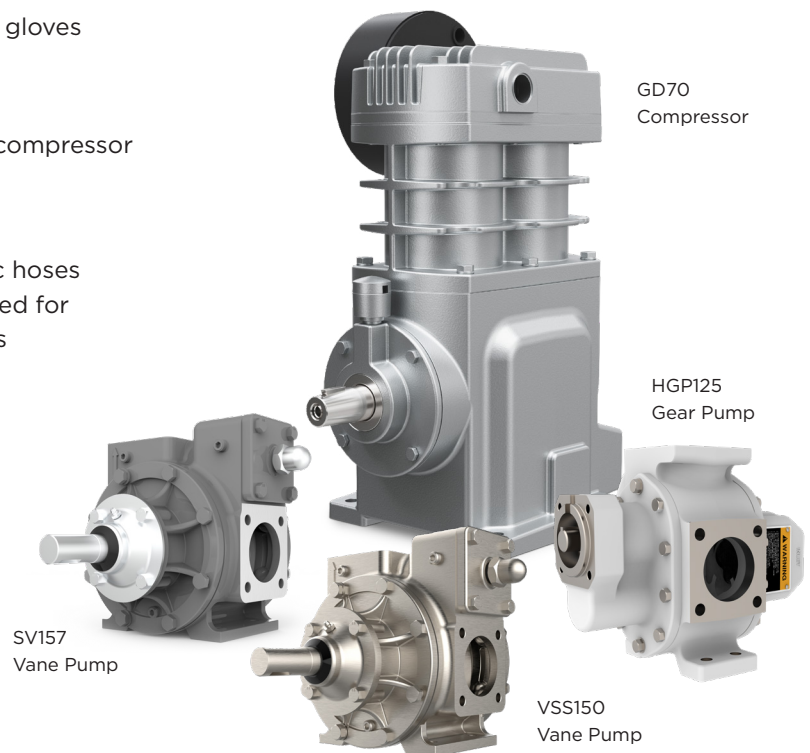
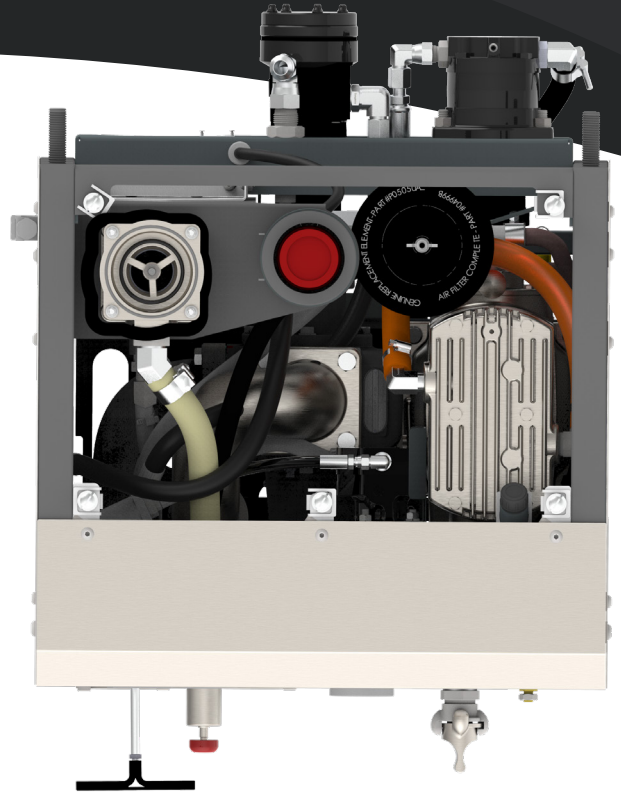
Simple Operation

- All controls & connections in one centralized location
- Operating instruction labels located near controls
- Oversized controls for operators wearing bulky gloves
- Flow control for pump & compressor
- Capable of simultaneous operation of pump & compressor

Cost Effective Installation

- Traditional systems require brackets & hydraulic hoses made for each system component to be mounted for installation compiling shop labor up to 36 hours
- Typical install for GD360 is less than 4 hours
- \$3,840 labor savings at \$120/hour*
- 250-300 lbs lighter weight*
- Requires up to 50% less oil*
- No drill mount option available

* Compared to traditional systems



GD 70

Oil Lubricated Piston Compressor

The GD70 is an oil lubricated piston compressor for pressure off-loading of bulk liquids. GD70 is a two-cylinder, single stage compressor is ideal for quickly off-loading your liquid bulk materials ranging from solvents to resins.

Features & Benefits

- Piston Air Compressor designed for use in the Liquid Bulk Tank market
- Lightweight and narrow construction that aids in installation where frame rail space is limited
- Built-to-last cast iron construction
- Reed valve design



Standard Accessories

Standard accessories supplied with the GD70:

- Relief valve
- Lubricant
- Check valve
- Air Filter

A drive flange is available as an optional accessory.

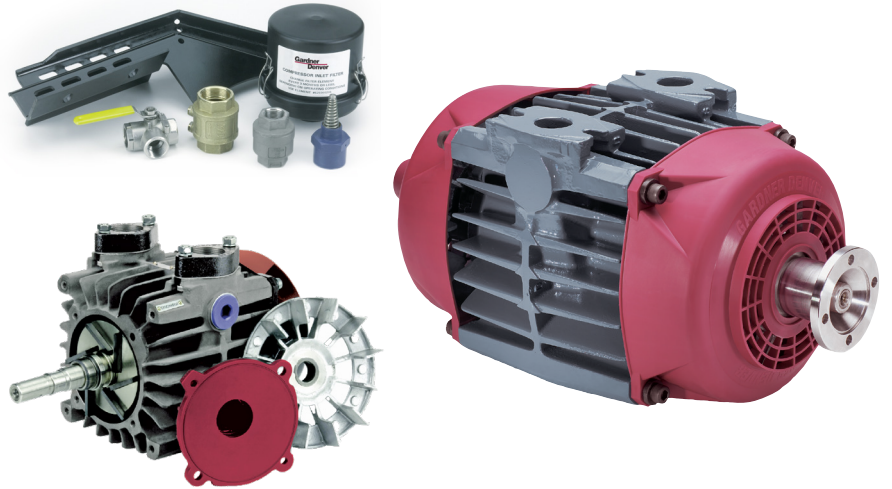
GD70	
Power	5 HP
Max PSIG	40
Max RPM	1500
Max Flow	40 CFM
Max BHP	5.0
Sump Capacity	1.27 qts.
*Weight	78 lbs.

*Weight includes filter

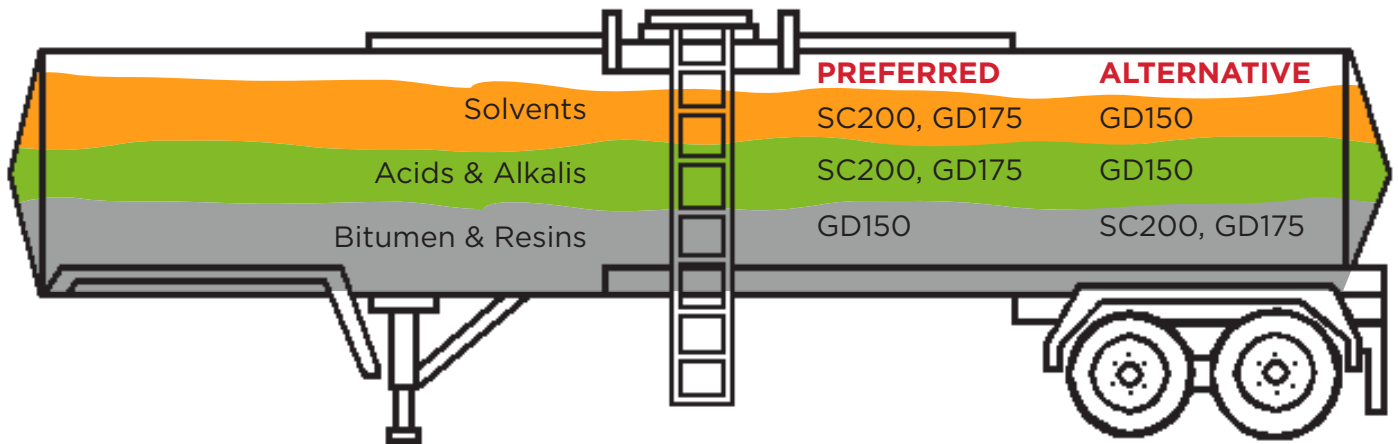
GD150/175 Rotary Vane Compressor

Features

- Oil-free compression
- Faster off-load times
- Light weight
- Compact design saves space
- GD150 - flow up to 87 cfm, pressure to 36 psi continuous
- GD175 - Flow up to 121 cfm, pressure to 36 psi continuous



More CFM is NOT always better...



Conclusion

- Thinner products flow more easily, making better use of high flow compressors
- Smaller delivery lines and viscous products respond better to pressure, not volume
- Your product mix is key
- Gardner Denver's product variety can be tailored to optimize your delivery performance

Industry Leader Since 1983

We know a thing or two about mobile hydraulics.



Hydrapak Coolers



MHX



MH5

“Always cool under pressure.”
“The original hydraulic cooler.”

- Robust stainless steel construction
- Eliminates excess weight caused by heavy reservoir
- Minimizes maintenance cost and spill risks
- Delivers highest flow ratings in its class
- Appropriate for:
 - CycloBlower
 - CycloSaver
 - D807
 - HPD450
 - Product pumps

The Hydrapak Story

- 1983—1 EH Series first developed in the U.K.
- 1988—Hydrapak redesigned for US market; named DH Series
- 1997—MH Series developed to include:
 - Improved cooling capacity
 - More compact design
- 2006—MH5 released
 - Flow rate up to 60 gpm
 - Highest heat rejection rate of any mobile cooler in the industry
- 2022—MHX released

HYDRAPAK DELIVERY

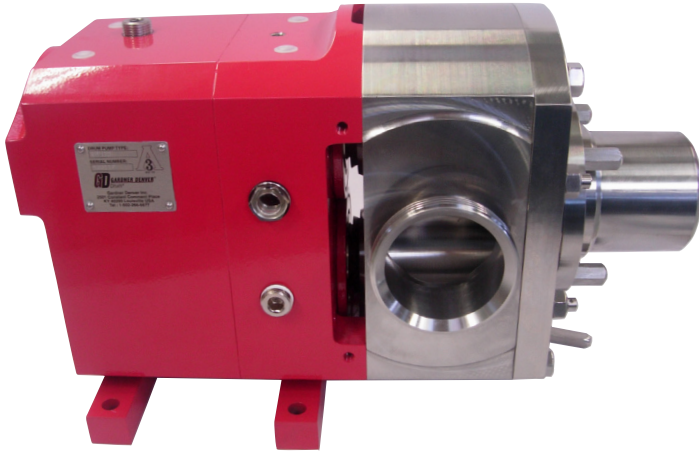
Model	Pressure PSI	Weight LBS	Reservoir Size GALLONS	Flow Rate GPM	HP Cooled HEATED @ 80° ΔT
MH1	3000	45	2	20	8
MHX*	up to 5000	90	3.4	30	15.2
MH3	3500	75	4	40	17
MH5	3500	94	4.4	60	28

Maximum flow and pressure listed. Actual performance may vary based on system design, environment, and maintenance.

*Weight for 2500-3500 PSI units.

STP125

3A Certified Sanitary Pump



#1 Industry Preferred Pump

Applications

- Sugars
- Fruit juice
- Chocolate
- Vegetable Oils
- Dairy Products
- Starches

Maintenance

Front loading product seal can be changed in minutes without disturbing the product pump head or piping

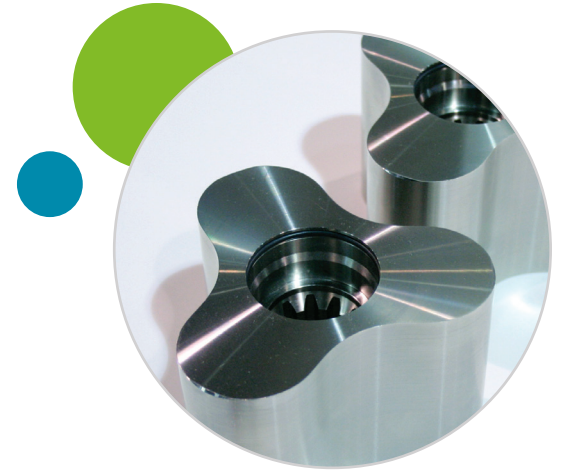
Flexibility

- Seal design allows you to choose the correct seal type for your application (O-ring, double lip, or mechanical seal)
- Quick Strip design makes cleaning and maintenance fast and efficient

Low Operation Costs

- Bidirectional pressure relief valve provides protection while loading or unloading
- Rotor profile and pump chamber designed using Computational Fluid Dynamics to ensure quiet, pulse-free, cavitation-resistant flow





Specifications

- Flow rate: up to 232 gpm
- Maximum speed: 750 rpm
- Maximum pressure: 145 psi
- Weight: 145 lbs. (with relief valve)
- Suitable for temperatures up to 300°F

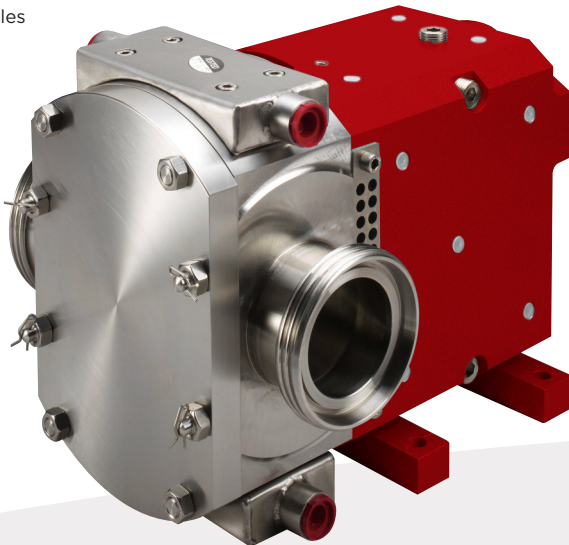
Drives

- Hydraulic direct mount
- Top shaft

Seal Options

- Standard: Nitrile O-ring seal assembly
- Optional O-ring Material: EPDM or Viton® and Double Lip seal configurations available
- Mechanical seals
- Available Ports
- Standard: 3" male ACME
- Optional: 3" male camlock or 3" male NPT (special order)

Optional Heat Saddles



Rotor removal tool is provided with every pump.

SC200

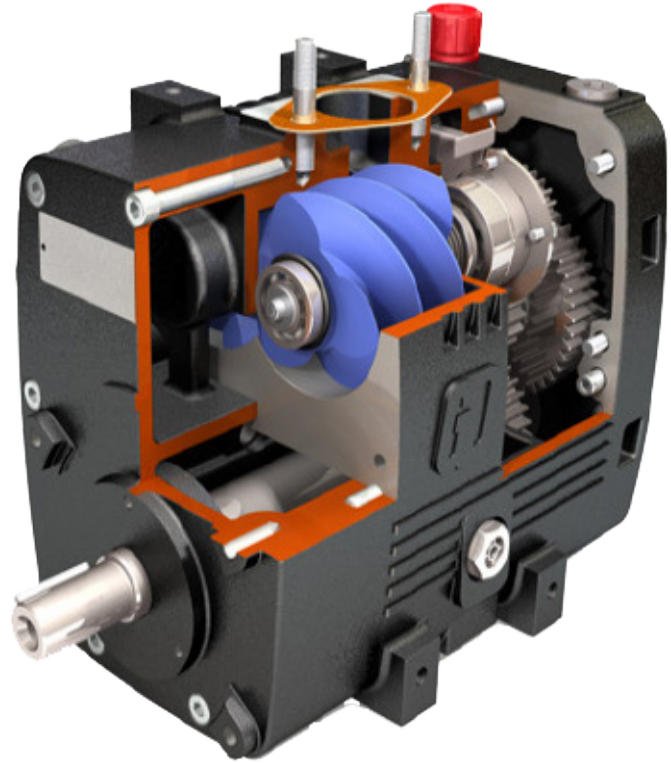
Rotary Screw Compressor

Unsurpassed Air Purity

- No spoiled loads
- No discharge filters
- No worries

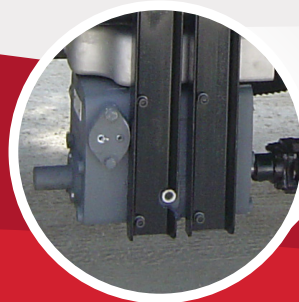
Features

- Contactless rotary screw design
- Compact
- Flow up to 112 cfm, pressure to 36 psi continuous
- Low weight to cfm ratio
- Reduced size makes it easily mountable on nearly any vehicle
- PTFE coated rotors reduce corrosion and abrasion
- No wearing components in compression chamber
- Suitable for: foodstuffs, acids, alkalis, hot bitumen and many other chemicals



SC200 Compact Installation

- Compact discharge silencer
- Right or left side inlet ports
- Through drive shaft for right or left hand rotation



Parts, Accessories & Service

All genuine Gardner Denver parts are factory engineered to meet the exact specifications of our machines. Only the highest quality components designed explicitly for our equipment are used. This provides the reliability to allow you to do your job with confidence.

Truck Blower Overhaul Kits

Gardner Denver certified kits use only factory-specified, original parts insuring “like-new” performance.

GD Inlet Filters

- Designed to withstand the heavy punishment of over-the-road operation
- Available in carbon-steel and stainless-steel

Relief Valves

- Discharge fittings available in 2” line size
- Discharge check valves available
- Kits include: check valve, relief valve and camlock complete with dust cap

Genuine GD Lubricants

Gardner Denver synthetic lubricants are formulated specifically to maximize machine performance and longevity.

Service Commitment

- Gardner Denver is proud to have a vast network of factory-trained and certified distributors.
- This provides 24/7 local service support and a level of expertise that is unmatched and offers you peace of mind.



Stainless Steel Filter



Relief Valve



The leader in every market we serve
by continuously improving all business processes
with a focus on innovation and velocity

Gardner
Denver[®]

www.GardnerDenver.com

©2024 Industrial Technologies and Services, LLC
Printed in U.S.A.
GDT-LIQ-TRANS 6th Ed. 5/24

